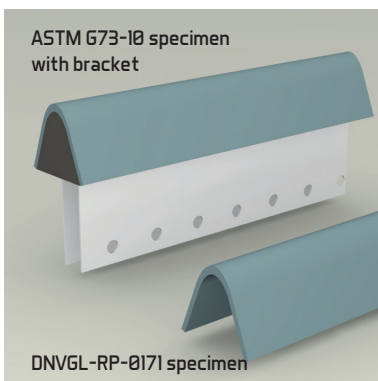


How to order RE test

OPERATION



Contact PolyTech's Anne Osberg (e-mail ao@poly-tech.dk, phone +45 41 99 90 53) to order a rain erosion test. Anne will also be glad to answer any questions you may have.

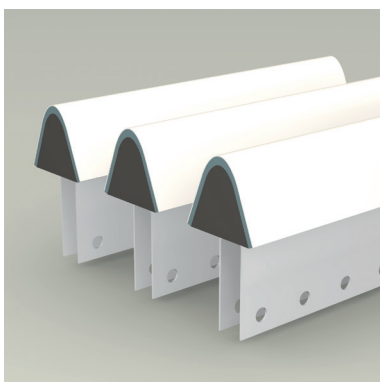


PolyTech offers profile specimens in GFR. Various profile geometries are available dependent on test setup and material to be tested.

Specimens for ASTM G73-10 are 225 mm and can be supplied with or without brackets. Specimens for DNVGL-RP-0171 are 450 mm.

The test setup can contain up to 3 specimens in one test.

PolyTech forwards the untreated specimens of the ordered profile to the customer.



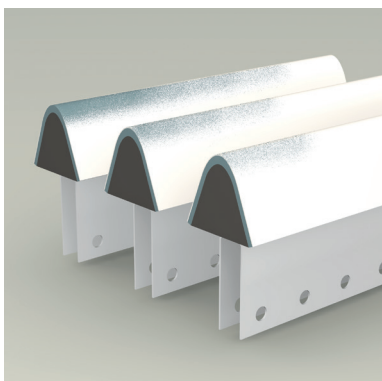
A time slot for test is booked at PolyTech.

The customer applies the material on the surface of the profiles.

The customer returns the coated specimens* to PolyTech for testing. The coated specimens should arrive at PolyTech one week prior to the pre-booked testing slot.

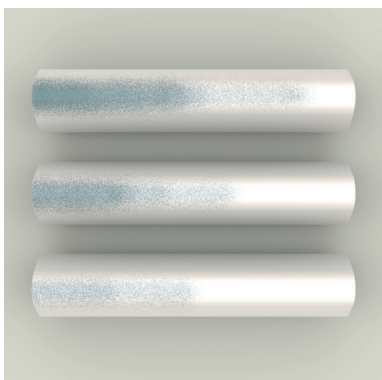
* PLEASE NOTE: When testing in accordance with DNVGL-RP-0171, the maximum weight tolerance between specimens is 5 grams.

OPERATION



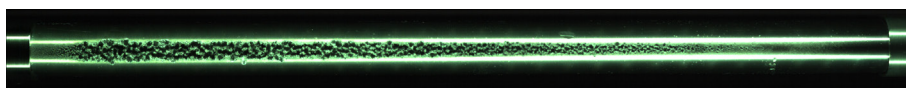
The test is conducted according to customer specifications and according to the ASTM G73-10 standard or the DNVGL-RP-0171 recommended practice.

Minimum test duration is 3 hours.



High resolution images are captured of the specimens at customer defined intervals during the rain erosion test.

When ordering RE tests according to DNVGL-RP-0171, you have the option of ordering manual high-contrast photos in addition to the high-resolution photos captured during the test.



When the test is finished, PolyTech's Anne Osberg e-mails a report to the customer.

PolyTech ships

- a test report in print
- high resolution images and a PDF version of the test report on a USB stick
- tested specimens

in our RE test kit and returns it to the customer.